



A Touchstone Energy® Cooperative 

1511 14,000 Rd, P.O. Box 368, Altamont, KS 67330
866-784-5500
www.twinvalleyelectric.coop

TWIN VALLEY
ELECTRIC COOPERATIVE

NEWS

Twin Valley Electric Cooperative, Inc.

Ron Holsteen CEO

Board of Directors

Daniel Peterson
President

Bryan Coover
Vice President

Ronald McNickle
Secretary

Larry Hubbell
Treasurer

Rodney Baker
Trustee

Tom Ellison
Trustee

Bryan Hucke
Trustee

Dareld Nelson
Trustee

Robert Webster, Jr.
Trustee

Office Hours

Monday-Friday
8 a.m. to 4:30 p.m.

Contact Us

1511 14,000 Rd, P.O. Box 368
Altamont, KS 67330
620-784-5500
www.twinvalleyelectric.coop

WE'VE MOVED

Twin Valley Opens New Office at 1511 14,000 Road



Twin Valley's new facilities are located at 1511 14,000 Road in Altamont.

Twin Valley Electric Cooperative has moved to a new location and opened for business on August 18.

Our new street address is 1511 14,000 Road, Altamont, KS 67330. Our new office location is one mile east of Altamont on the south side of Highway 59/160. All of our facilities are at this location.

We invite members to join us for an **OPEN HOUSE ON THURSDAY, OCTOBER 9**. Please mark your calendar and plan on visiting our new facilities on that afternoon. We will post more information about the Open House in our October newsletter in *Kansas Country Living* magazine and we will include a bill stuffer with your October billing statement.

The only change to our address is the street location. We will still use

P.O. Box 368, Altamont, KS 67330 as our mailing address. Our phone numbers will remain the same: 620-784-5500 during office hours and 866-784-5500 for after-hours outage calls. Our office hours will continue to be 8 a.m. to 4:30 p.m. on Monday through Friday.

There is a drop box located on the west side of the new building where you can drive up to the box and deposit your payment without having to get out of your vehicle.

We are looking forward to visiting with you at our new facilities and will provide more information about the new building in future newsletters.



Our new office location is one mile east of Altamont on the south side of Highway 59/160.

Co-op Connections Card Savings Update



In July, members saved \$31.25 in prescriptions using the Co-op Connections Card. That's a total of **\$228.86** in 2014.

FROM THE MANAGER

Electricity Remains a Good Value



Ron Holsteen

In today's world, you won't find many items that cost less than \$5. You can purchase a gallon of milk, a gallon of gas or a Big Mac® meal from McDonald's. But did you know that an average day's worth of electricity costs less than \$5?

Even in our country's shifting energy climate, electricity remains a good value. In fact, electricity has the lowest cost per day of any of the items listed above. And not all of those items are necessary for daily life!

As CEO of Twin Valley Electric Cooperative, I urge you to think about your daily necessities (electricity and gasoline, to name a couple), and then think about the cost of the special treats we allow ourselves to purchase on a weekly basis (maybe even on a daily basis for some items!). We don't often question the cost of a Big Mac® meal—it costs over \$1 more to buy a Big Mac® meal than it does to purchase a day's worth of power. And yet, we frequently become upset if our electricity rates rise.

It makes sense; we have become increasingly reliant upon electricity. Electricity has, for many of us, gone from a luxury commodity to a necessity and an expectation. We expect the lights to come on when we flip the switch, and we expect our power to stay on during the best and worst conditions. How else would we keep our food fresh, our homes cool in the summer or warm in the winter? It is easy to cut a Big Mac® out of your spending routine here and there to save a few dollars. But we cannot simply cut electricity out of our budgets if times get tough or we decide that we want to scale back our spending in order to save.

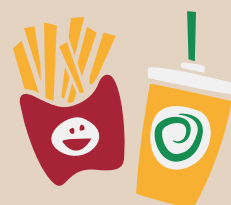
Perhaps that is why it is so upsetting to us when our rates increase, even if only in small increments. It is nearly impossible for us to think

about what our lives would be like if we did not have electricity. If at times it doesn't seem that electricity is affordable, remember—even as the demand for electricity grows—annual cost increases still remain low, especially when compared to other consumer goods such as medical care, education, gasoline and, yes, even Big Macs®. Electricity is still a great bargain. And also remember this: as the CEO of Twin Valley, your local electric cooperative, I am committed to making sure that you and your family always have safe, reliable and affordable electric service in your home.

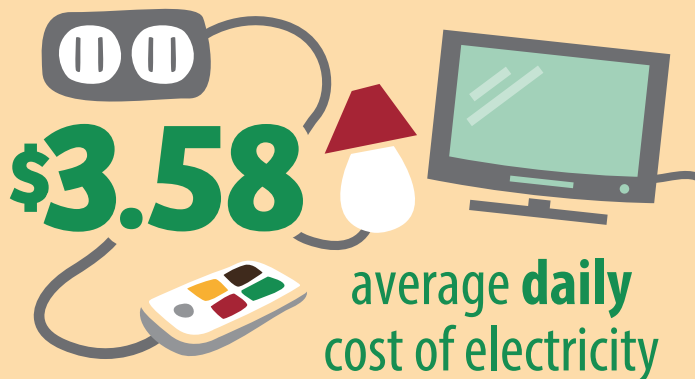
So the next time you crave a Big Mac®, remember your electric bill, and think about what a great deal you're getting for your dollar!

THE VALUE OF *Electricity*

*Electricity is expressed on a daily basis using EIA
2012 Average U.S. Monthly Residential Bill of \$107*



average cost of
a Big Mac® meal

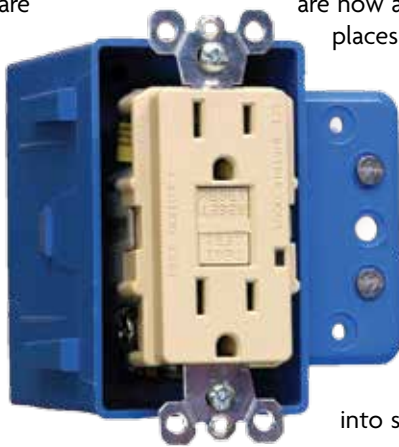


average daily
cost of electricity

*Big Mac® is a registered trademark of McDonald's Corporation.
McDonald's Corporation does not endorse or sponsor this material.
Source: Statista.com, 2014*

Are You Grounded? GFCI Outlets Can Help!

Did you know there are different types of electrical outlets? Each are designed for different purposes; however, there is one specific type that stands high above the rest—the ground-fault circuit interrupter (GFCI) outlet. GFCIs have saved thousands of lives and cut the number of electrocutions in half since the 1970s.



GFCIs are the most efficient outlet in protecting from electrical shock. If it senses a loss of current, the outlet switches off power to that circuit.

If your home lacks GFCI outlets, don't fret—you can learn how to "get grounded."

GFCIs are the most efficient outlet in protecting from electrical shock. If it senses a loss of current, the outlet switches off power to that circuit. These devices can either be installed in your electrical system or built into a power cord. The third hole at the bottom of the outlet is known as the "ground" slot, and it monitors electrical currents that flow through the left "neutral" slot and the right "hot" slot on each outlet. A GFCI can react faster than a blink of an eye to any imbalance of power by immediately shutting off the electrical current. These outlets

are now a requirement in all places where water could potentially come into contact with electrical products such as bathrooms, garages, outdoors and kitchens. GFCIs are not exclusive to three-prong outlets. They can be installed into standard outlets, and there are even portable devices available when installation is not practical.

GFCIs should be tested at least once a month to ensure they are working effectively. The first step you need to take is to test an item, such as a lamp, that visibly powers on when plugged in. Push the "reset" button to prepare the outlet then push the "test" button. Did your lamp turn off? If it did, the GFCI is working properly. Now, hit the "reset" button once again to power it back on. If your lamp did not power off, then you should contact a certified electrician to correct the problem.

Next time you have a free moment, take the time to look around your house. If you're not "grounded," consider updating your electrical outlets to GFCIs.

Beyond the Flip of a Switch

With the mere flip of a switch, electricity illuminates our lives. But have you ever thought about where your power comes from? Most of us don't give it a second thought until our service is interrupted and we're left in the dark—even if only for a short amount of time. In today's world, electricity is a necessity, and this necessity travels a great distance to reach you—our members.

Twin Valley Electric Cooperative provides electricity to 3,200 meters, and it takes a network of folks to do so. We build and maintain overhead power lines and manage the equipment needed to provide you with safe, reliable power—but did you know that we don't actually generate the power that is supplied to your home? That's where our local generation and transmission cooperative (G&T) comes in.

Twin Valley receives electricity from Kansas Electric Power Cooperative (KEPCo), a G&T located in Topeka. G&Ts are wholesale power suppliers that are owned and governed by electric distribution cooperatives, just like Twin Valley. KEPCo produces and purchases electricity, then sends the power over high-voltage transmission lines to Twin Valley. Since G&Ts are owned by multiple distribution cooperatives, operating costs are split among the owners. This process allows us to purchase power at a lower cost. KEPCo owns part of the Wolf Creek Nuclear Plant, part of the Iatan II coal-fired plant and has a significant hydropower allocation from the Southwest Power Pool. These resources provide us with a diverse generation portfolio.

After the power is sent over high-voltage transmission lines, it then makes its way to our substations, where the voltage is reduced in order to make it to your home safely. Twin Valley owns two substations and four metering points, each located within our four-county service territory. From the substations and metering points, power is sent to Twin Valley's transformers, those large boxes that sit at the top of power poles, then directed to your home.

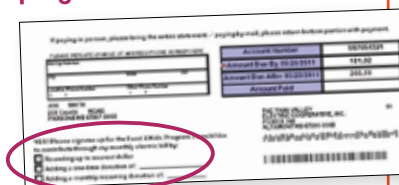
As you can see, there's a little more to it than flipping a switch, but we've got you covered. Twin Valley has provided our members with safe, reliable and affordable power for 67 years, and that continues to be our number one goal today.

Support Food-4-Kids & Fight Child Hunger

Check YES to donate to the Food-4-Kids program this month

Twin Valley Electric's Food-4-Kids program supports elementary schools in our service area that send food-filled backpacks, provided by the Kansas Food Bank, home with students on Friday afternoons. For most of these children, the food is the difference between having enough to eat on Saturdays and Sundays—or not.

Twin Valley members are encouraged to round up their bill to the next dollar amount, or more, to be added to their monthly electric service bill. Check "Yes" on your next bill to support the program.



THERE'S SOMETHING TO BE SAID ABOUT STAYING IN THE SAME NEIGHBORHOOD.

HOUSE

1936..... \$3,925

2013..... \$313,700

INCREASE..... 80X

ELECTRICITY

1936..... 5¢

2013..... 11¢

INCREASE..... 2X

BASED ON AVERAGE COST PER KILOWATT HOUR

Over the past 75 years, the price of a home has increased dramatically. But we've helped to ensure that the price of electricity has barely moved. Learn more about the power of your co-op membership at TogetherWeSave.com.



Touchstone EnergySM
TOGETHERWESAVE.COM