



A Touchstone Energy® Cooperative 

1511 14,000 Rd, P.O. Box 368, Altamont, KS 67330

866-784-5500

www.twinvalleyelectric.coop

**TWIN VALLEY
ELECTRIC CO-OP**

NEWS

Twin Valley Electric Cooperative, Inc.

Angie Erickson
CEO

Board of Trustees

Bryan Coover
President

Larry Hubbell
Vice President

Dareld Nelson
Treasurer

Bryan Huckle
Secretary

Rodney Baker
Trustee

Tom Ellison
Trustee

Diane McCartney
Trustee

Jared Nash
Trustee

Jason Zwahlen
Trustee

Office Hours

Monday-Friday
8 a.m. to 4:30 p.m.

Contact Us

1511 14,000 Rd.
P.O. Box 368
Altamont, KS 67330
866-784-5500
www.twinvalleyelectric.coop

Concern for Community

In 2019, you contributed **\$1,499.66**
to Operation RoundUp.

FROM THE MANAGER

Making Positive Impact on Community, Earth ‘Cooperatively’



Angie Erickson

On April 22, we mark the 50th anniversary of the original Earth Day event that mobilized 20 million Americans and became a catalyst for individuals and

businesses to rethink, reinvent and recycle for the benefit of people and our planet.

Cooperatives across the country have led the electric utility industry in actively expanding their fuel portfolios to include an array of renewable sources, while educating their consumer-members on best practices in reducing energy use.

Co-ops have been using clean, renewable hydropower for more than 75 years. In addition to the roughly 10 gigawatts of hydropower purchased from federally-run dams, co-ops have developed an additional 692 megawatts of hydropower with 724 co-ops in 43 states using hydro as a source of power.

Solar's flexible and scalable abilities have prompted co-ops to triple their solar capacity in the last three years. In Kansas alone, both generation and transmission cooperatives that supply

power to the 27 distribution cooperatives including Twin Valley Electric, have or will soon have solar included in their power supply mix. Kansas Electric Power Cooperative (KEPCo) began commercial operation of its Prairie Sky Solar Farm in 2017, and Sunflower Electric Power Corporation, at press time, was nearing completion of the Johnson Corner Solar Project. In addition, several electric co-ops serving Kansans have invested in their own solar power.

A drive in either direction of the Sunflower State showcases the expansion of wind energy. In fact, since the beginning of 2008, wind generating capacity in Kansas has more than tripled, making Kansas one of the top five states in the nation. Nationally, wind development has surged in the last 10 years and is now second only to hydro in the co-op's renewable portfolio.

There are many ways we can help the environment, and some are easier than you'd think. Here are a few simple actions you can take now to reduce your energy use.

Audit your lightbulbs. Swapping out any remaining incandescent bulbs with LED bulbs can make a big difference in home efficiency, and it's one of the easiest ways to reduce your energy bill.

Continued on page 16C ►

Annual Meeting Postponed

Our co-op's concern for community goes beyond involvement in community activities and the local economy. In an abundance of caution, Twin Valley Electric Cooperative has decided to **POSTPONE** our annual meeting this year due to concerns regarding COVID-19.

POSTPONED



2020 Board of Trustees Candidates

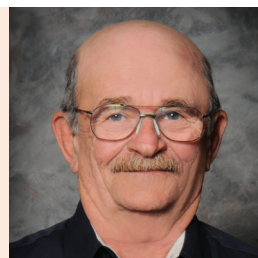
DISTRICT 1

RODNEY BAKER and his wife, Susan, live in rural Dennis. Rodney is the postmaster for Fredonia Post Office. He has lived in the Twin Valley territory for more than 15 years and has been a director for six years.

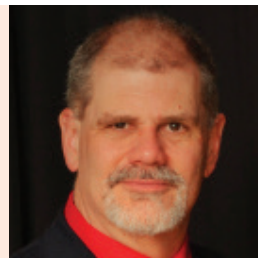


DISTRICT 2

TOM ELLISON and his wife, Gwen, have lived in the rural Cherryvale area for more than 20 years. Ellison attended Labette County High School, Coffeyville Community College and Pittsburg State University. In the past, he has been employed by Boeing and later Funk Manufacturing where he was a senior cost estimator and price analyst. In 1999, the Ellison's started their own machining business, which continues today. He has been on the Twin Valley board for 18 years, served on the Signed Labor Committee for three years and has served on the CEO search committee. In his spare time, he enjoys fishing and being with family.



MATT ATTEBERRY and his family have lived in the rural Parsons area since 1990. He has been a member of Twin Valley for eight years. Atteberry holds a bachelor's of science in psychology from Kansas State University and a master's in social work from the University of Kansas. Atteberry has been the executive director of Labette Center for Mental Health Services for 17 years. In addition to holding board positions with several organizations in the mental health field, Atteberry is heavily involved in the community and dedicated to helping others. He serves on the Meals on Wheels board, is active in Rotary Club and is a graduate of Leadership Parsons. He is committed to ethical leadership and decision making. He wishes to serve on the board of directors to help maintain low rates without sacrificing quality of service and to understand how the utility market will change as energy sources change.



DISTRICT 3

DARELD NELSON and his wife, Carolyn, live in rural Edna and have two daughters. He is originally from Minnesota and graduated from Mankato State University with a degree in business administration. He has been a Twin Valley member for more than 25 years and has served on the Twin Valley Board for six years. He currently works for John Deere in Coffeyville in purchasing. He also raises cattle.



On April 13, Remember to #ThankALineworker

Lineworkers serve on the frontlines of our nation's energy needs, and on April 13, 2020, Twin Valley, along with other electric cooperatives across the country, will honor the brave men and women who work hard to keep the lights on.

Line crews work around the clock, sometimes in difficult and dangerous conditions, to keep power flowing to our local communities. Whether they're restoring power after a major storm or maintaining critical infrastructure to our electric system, lineworkers are at the heart of our co-op.

When a storm hits, they set aside

their personal priorities because Mother Nature doesn't work around holidays, vacations and birthdays. A service-oriented mentality is one of the many admirable characteristics of an electric lineworker.

Twin Valley is proud to honor the lineworkers who maintain the power lines in our service territory.

Twin Valley invites all co-op members to take a moment and thank a lineworker for the important work they do. On April 13, you can use #ThankALineworker on social media to show your support for the brave men and women who power our lives.

Making Positive Impact on Community, Earth 'Cooperatively'

Continued from page 16A ►

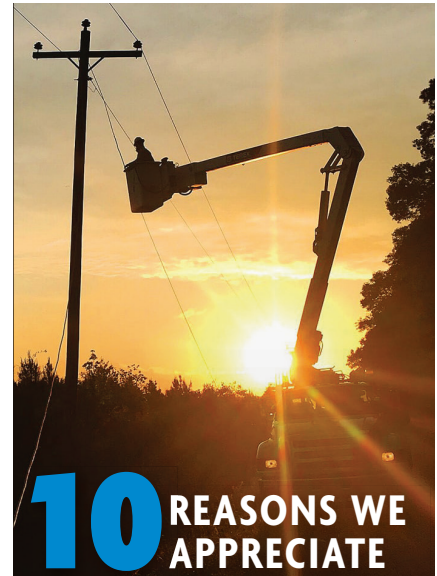
Maintain your HVAC system. Replace your home air filters to allow your HVAC system to run more efficiently. Air filters prevent dust and allergens from clogging your HVAC system. Changing the filters makes your unit run more efficiently — keeping your home cooler in the summer and warmer in the winter.

Examine your smart or programmable thermostat. Make sure it is programmed for the current season and family schedule. This is one of the best tools at your fingertips, however, you can only achieve these efficiencies and savings if it is programmed properly

and adjusted periodically to keep pace with changes in household routines.

Seal windows and doors. Seal leaks with weather stripping and caulk to keep cool air indoors during warm months and prevent cold air from penetrating the indoors during colder months. Sealing gaps around piping, dryer vents, fans and outlets also helps to seal the envelope and increase efficiency.

As we celebrate Earth Day this April, let's continue to work together and make a positive impact on our local community, the Sunflower State — and our beautiful planet.



10 REASONS WE APPRECIATE LINEWORKERS

Although we appreciate each and every co-op employee, it takes a special kind of person to be an electric lineworker. Here are the top 10 reasons we appreciate our lineworkers.

- 10 They are specially trained to work on power lines and related equipment.
- 9 They are dedicated to safely and efficiently restoring power following weather or outages.
- 8 They work overtime, many holidays and get up in the middle of the night to help restore power.
- 7 They enjoy serving our communities.
- 6 They aren't afraid of heights.
- 5 They help other electric co-ops with major outages at a moment's notice.
- 4 They lend their talents in many ways, including educating the public about electrical safety.
- 3 They have each other's backs.
- 2 They are trained to work safely on both dead and live power lines.
- 1 We couldn't provide excellent service without them or any of our other dedicated employees.

Energy Efficiency Tip of the Month

This spring, consider using a rain barrel to save energy. Rain barrels capture rainwater from a roof that can be used later for watering your lawn, garden or indoor plants. **Source: energy.gov**



LINEWORKER GEAR WORD SEARCH



Did you know lineworkers wear special protective gear to keep them safe while working on power lines and other electrical equipment? Read the descriptions to learn about a lineworker's gear and find the bolded words in the puzzle below.

- ▶ **Safety goggles** keep debris away from lineworkers' eyes while on the job.
- ▶ **Hard hats** protect lineworkers from head injuries and falling debris.
- ▶ **Work boots** provide extra protection while lineworkers work with heavy materials that could fall near their feet.
- ▶ **Flame-resistant** clothing keeps lineworkers safe from electrical hazards.
- ▶ **Insulated gloves** protect lineworkers from electrical shock while working on power lines.
- ▶ **Equipment belts** hold several tools that lineworkers need to get the job done.

